

6FM200X 12V 200Ah(10hr)

The rechargeable batteries are lead-lead dioxide systems. The dilute sulfuric acid electrolyte is absorbed by separators and plates and thus immobilized. Should the battery be accidentally overcharged producing hydrogen and oxygen, special one-way valves allow the gases to escape thus avoiding excessive pressure build-up. Otherwise, the battery is completely sealed and is, therefore, maintenance-free, leak proof and usable in any position.



Battery Construction

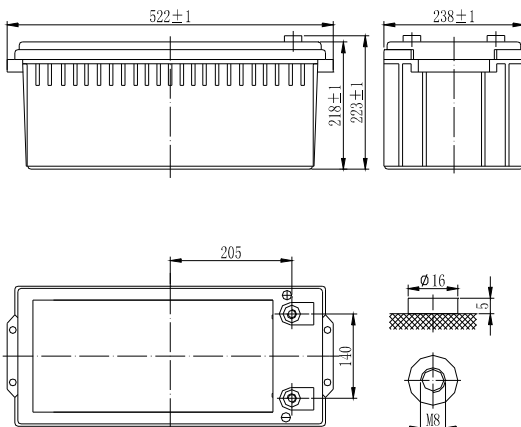
| | | | | | | | | |
|--------------|----------------|----------------|-----------|-------|--------------|----------|------------|---------------|
| Component | Positive plate | Negative plate | Container | Cover | Safety valve | Terminal | Separator | Electrolyte |
| Raw material | Lead dioxide | Lead | ABS | ABS | Rubber | Copper | Fiberglass | Sulfuric acid |

General Features

- Absorbent Glass Mat (AGM) technology for efficient gas recombination of up to 99% and freedom from electrolyte maintenance or water adding.
- Not restricted for air transport-complies with IATA/ICAO Special Provision A67.
- UL-recognized component.
- Can be mounted in any orientation.
- Computer designed lead, calcium tin alloy grid for high power density.
- Long service life, float or cyclic applications.
- Maintenance-free operation.
- Low self discharge.

Dimensions and Weight

| | |
|--------------------------|-------------|
| Length(mm / inch) | 522 / 20.55 |
| Width(mm / inch) | 238 / 9.37 |
| Height(mm / inch) | 218 / 8.58 |
| Total Height(mm / inch) | 223 / 8.78 |
| Approx. Weight(Kg / lbs) | 65 / 143.3 |



Performance Characteristics

| | |
|--|--|
| Nominal Voltage | 12V |
| Number of cell | 6 |
| Design Life | 10 years |
| Nominal Capacity 77°F(25°C) | |
| 10 hour rate (20.0A, 10.8V) | 200Ah |
| 5 hour rate (36.7A, 10.5V) | 183.5Ah |
| 1 hour rate (138A, 9.6V) | 138Ah |
| Internal Resistance | |
| Fully Charged battery 77°F(25°C) | 3mOhms |
| Self-Discharge | 3% of capacity declined per month at 20°C(average) |
| Operating Temperature Range | |
| Discharge | -20~60°C |
| Charge | -10~60°C |
| Storage | -20~60°C |
| Max. Discharge Current 77°F(25°C) | 1000A(5s) |
| Short Circuit Current | 3500A |
| Charge Methods: Constant Voltage Charge 77°F(25°C) | |
| Cycle use | 14.4-14.7V |
| Maximum charging current | 60A |
| Temperature compensation | -30mV/°C |
| Standby use | 13.6-13.8V |
| Temperature compensation | -20mV/°C |

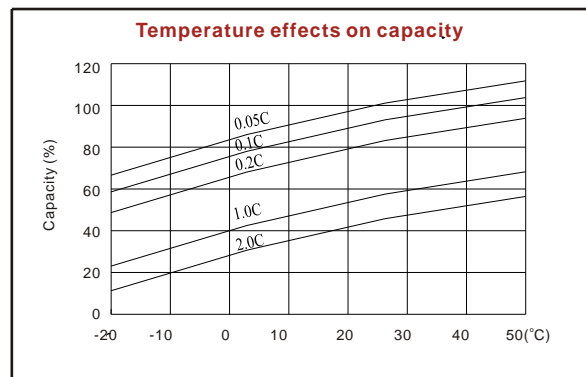
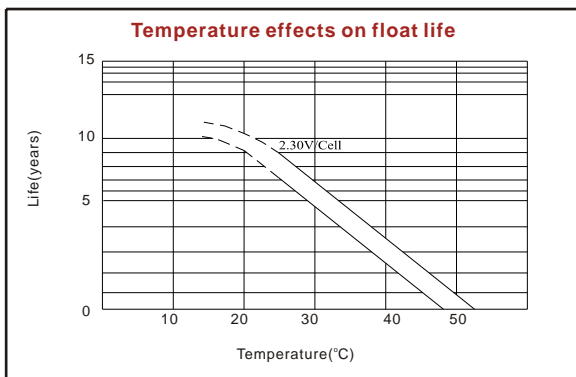
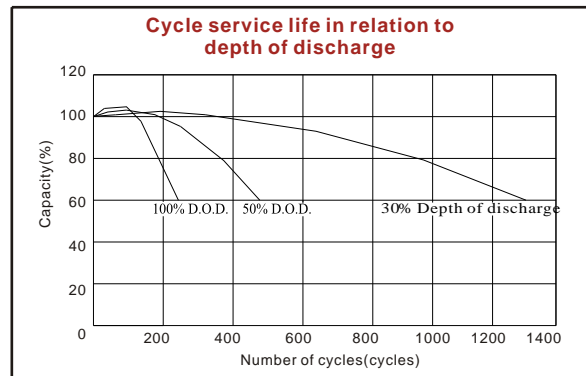
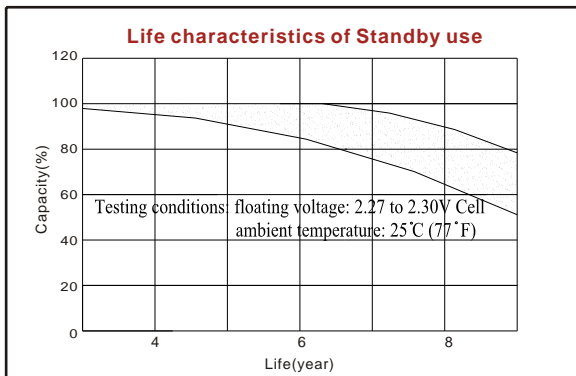
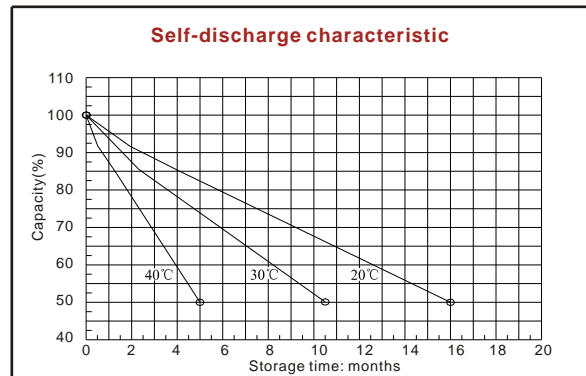
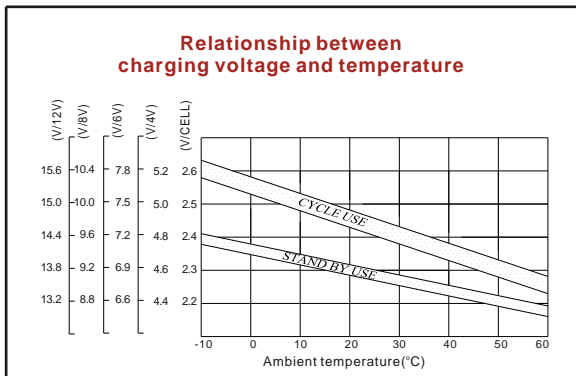
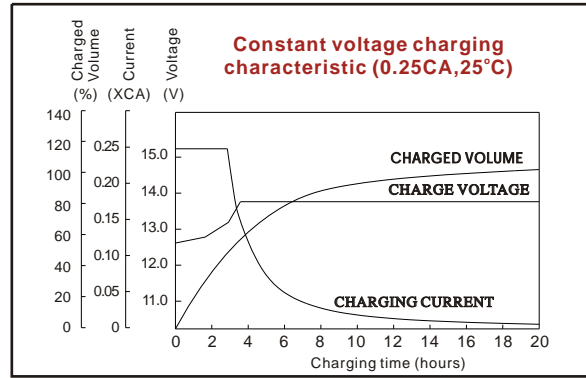
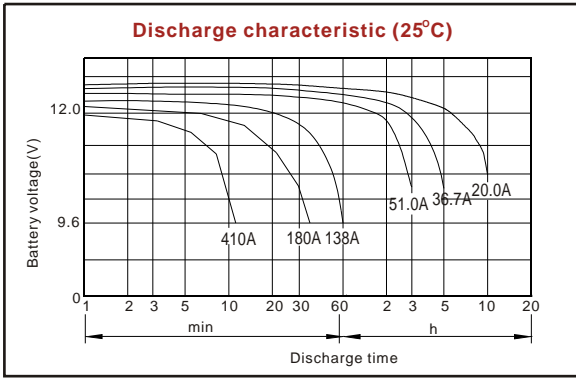
Discharge Constant Current (Amperes at 77°F25°C)

| End Point Volts/Cell | 10min | 15min | 30min | 1h | 3h | 5h | 10h | 20h |
|----------------------|-------|-------|-------|-----|------|------|------|-------|
| 1.60V | 440 | 358 | 210 | 138 | 53.1 | 39.0 | 20.5 | 10.70 |
| 1.65V | 414 | 337 | 203 | 135 | 52.0 | 38.2 | 20.4 | 10.65 |
| 1.70V | 390 | 316 | 195 | 132 | 51.0 | 37.5 | 20.3 | 10.60 |
| 1.75V | 364 | 295 | 188 | 129 | 49.8 | 36.7 | 20.2 | 10.55 |
| 1.80V | 334 | 274 | 180 | 126 | 48.4 | 35.9 | 20.0 | 10.5 |

Discharge Constant Power (Watts at 77°F25°C)

| End Point Volts/Cell | 10min | 15min | 30min | 45min | 1h | 2h | 3h | 5h |
|----------------------|-------|-------|-------|-------|-----|-----|------|------|
| 1.60V | 756 | 611 | 402 | 287 | 266 | 145 | 103 | 74.3 |
| 1.65V | 719 | 591 | 387 | 282 | 261 | 142 | 102 | 73.7 |
| 1.70V | 681 | 572 | 372 | 276 | 256 | 139 | 100 | 73.1 |
| 1.75V | 641 | 553 | 357 | 270 | 250 | 136 | 98.8 | 72.6 |
| 1.80V | 609 | 520 | 342 | 265 | 245 | 132 | 97.7 | 72.0 |

(Note)The above characteristics data are average values obtained within three charge/discharge cycles not the minimum values.



ISO9001:2000

MH25860

G4M19906-9202-E-16

www.vision-batt.com

Shenzhen Center Power Tech. Co., Ltd.
 Center Power Industrial Park, Tongfu Industrial District Dapeng Town, 518120 Shenzhen, China
 Tel: (+86-755) 8431 8088 Fax: (+86-755) 8431 8038 E-mail: sales@vision-batt.com